

# **JUNIOR PARENT & STUDENT NIGHT: Postsecondary Education Planning Welcome!**

**HMHS  
Counseling Department**

**February 7, 2018**



# Goals Of Tonight's Meeting

- Seek Unified Effort
  - Student, Parent, and Counselor
- Review
  - Naviance Family Connection
  - Counseling Department Website
  - Postsecondary Education Planning Guide
    - Access on HMHS Counseling Department website under the <11<sup>th</sup> Grade> tab

# Naviance Family Connection

- Access Family Connection through Counseling section of HMHS Website:  
<http://haddonfield.k12.nj.us/highschool/Counseling/Counsel-Home.htm>
- Log on to Family Connection using your child's email and password

# Naviance Family Connection Homepage

Haddonfield Memorial High School

Logged in as: William Seaman ([log out](#))

family connection

**Colleges**

colleges

careers

about me

**About Me**

pages

- [cluster finder](#)
- [super match](#)

Annual Message

**Welcome HMHS Student!**

**Careers**

links

- [rotc](#)
- [common application](#)
- [college prowler](#)
- [ctcl](#)
- [college gov](#)
- [college click tv](#)
- [my chances](#)
- [nj transfer](#)
- [college board/sat](#)
- [act](#)

**Resources**

# Naviance Family Connection College List

- home
- courses
- colleges
- careers
- about me
- my planner

search for colleges:

Go

colleges I'm thinking about

MORE SEARCH OPTIONS >>

[+ add colleges to this list](#) | [compare me](#)

## my colleges

- > [colleges I'm thinking about](#)
- > [colleges I'm applying to](#)
- > [college visits](#)

## college research

- > [SuperMatch™ college search](#)
- > [college match](#)
- > [college compare](#)
- > [college lookup](#)
- > [college search](#)
- > [college resources](#)
- > [college maps](#)
- > [scattergrams](#)
- > [enrichment program](#)

College	Delivery type	Added By	My Interest	Application Deadlines†				Actions		
				Early Decision	Early Action	Priority	Regular Decision	Manage Communication	Graph	WWW
<input type="checkbox"/> <a href="#">Camden County Coll</a>		student	N/A	-	-	-	-			
<input type="checkbox"/> <a href="#">The College of New Jersey</a>		student	N/A	Nov 01	-	-	Feb 01			
<input type="checkbox"/> <a href="#">Pennsylvania State Univ</a>		student	N/A	-	-	-	-			
<input type="checkbox"/> <a href="#">Princeton Univ</a>		student	N/A	-	Nov 01	-	Jan 01			
<input type="checkbox"/> <a href="#">Rider Univ</a>		student	N/A	-	Nov 30	-	-			

Update Interest

Move to Application List

Remove from List

†College information provided by the colleges themselves. Costs, dates, policies, and programs are subject to change, so please confirm important facts with college admission person.

**Saved List of  
“Colleges I’m Thinking About”**

# Naviance Family Connection Compare Me

compare me

[back to list](#)

The averages below are for students from your high school that have been accepted to that particular college. School averages are displayed in green when your number is higher and in red when your number is lower. Your PSAT score, if available, has been converted to the equivalent SAT score and compared to the average single SAT score of an accepted student. Your PLAN score can also serve as a direct estimate of your ACT score and can be compared to the average ACT score of an accepted student. The column labeled "Accept" shows the number of students accepted out of the number of students that applied.

## Comparison to Accepted Averages (All years to 2017)

	GPA	PSAT to SAT 1600	PSAT to SAT 2400	Single SAT 1600	Combined SAT 1600	Single SAT 2400	Combined SAT 2400	PLAN to ACT	ACT	IB	Accept
Example Student	95.00	-	-	1400	1400	-	-	-	-	-	-
<a href="#">The College of New Jersey</a>	94.97	1080	1881	1080	1278	1881	1905	26	26	-	128/278



GPA




Test Scores



Acceptances

# Naviance Family Connection Scattergrams

The College of New Jersey 

Communicate 

Apply online

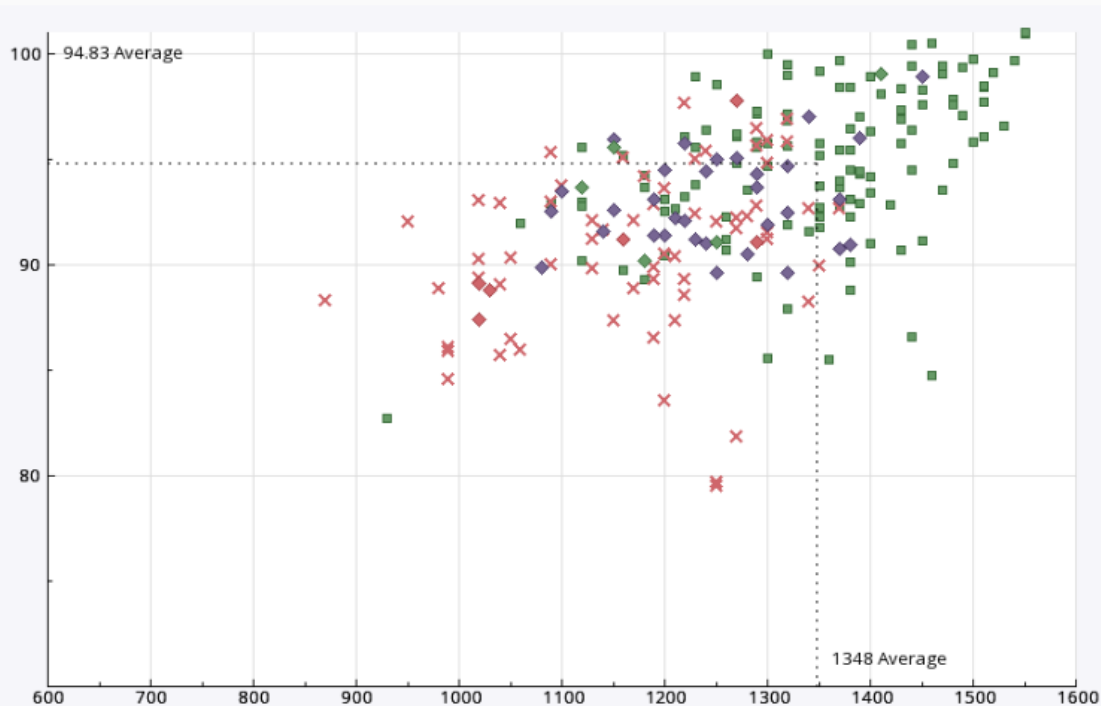
Overview

Studies

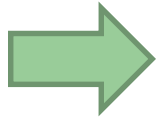
Student Life

Admissions

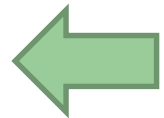
Comparing Weighted GPA vs. SAT (1600 Scale)



GPA



Test Scores



# Counseling Department Website

Home
Naviance
Course Selection Information
9th Grade
10th Grade
11th Grade
12th Grade
Forms
NCAA
Support Services
Presentations
Profile
Program of Studies
Testing
Transcript Requests - Graduates/Former Students

## Welcome to the HMHS Counseling Department

The mission of the Haddonfield Memorial High School Counseling Department is to provide a comprehensive school counseling program that addresses the emotional, social, career developmental, and academic needs of all students in the Haddonfield School District. Having a comprehensive counseling program that is fully integrated with the academic mission of the district and works with all stakeholders in the school and community can help ensure success for Haddonfield students.

### COUNSELING STAFF

<b>Tracy Matozzo, MA</b> Dean of Student Life/Supervisor of Counseling Services 856-429-3960, ext. 105		<b>Michele Papa</b> Counseling Secretary 856-429-3960, ext. 113		
COUNSELOR	Freshmen Class of 2020	Sophomores Class of 2019	Juniors Class of 2018	Seniors Class of 2017
<b>Steven Fluharty Jr., MA</b> Freshman Transition Counselor 856-429-3960, ext. 128	Freshmen A - Z			
<b>Jeff Holman, M.Ed.</b> School Counselor 856-429-3960, ext. 129		A-DeF	A-De	A - Fagan
<b>Judy Dorfman, MA, Ed.S</b> School Counselor 856-429-3960, ext. 127		Del - Ku	Di -Hi	Fal - Kane
<b>William Seaman, MA</b> School Counselor 856-429-3960, ext. 254		Kw - San	Ho - Ot	Ken - Pan
<b>Carla O'Hara, MA</b> School Counselor 856-429-3960, ext. 130		Sap - Z	Ow - Y	Par - Z



# My Child Is Having Difficulty In Choosing A Major

- Focus on interests, strengths, and values
- Review performance in academic courses
- Review Career Interest Profiler in Naviance
- Identify majors that relate to these interests
- Develop flexible educational plan
- Consult your counselor and Naviance for additional resources

# Counseling Department Activities During Junior Year

- **HMHS College Fair – October**
- **College Representatives Visit HMHS – Fall**
- **PSAT/NMSQT Results – December/January**
- **Career Interest Profiler – December**
- **Junior Parent & Student Night – February**

# Counseling Department Activities...

## (Continued)

- **Naviance Review, and College Search** – January/February
- **Scheduling Conference** – Beginning late February (Review Four-Year Personal Learning Plan, which includes testing, activities, summer programs, etc.)

# Counseling Department Activities...

## (Continued)

- **“Focus on Your Future” College Fair** –  
March 14, 2018 at Camden County College
- **Senior Information Sheet & Resume** –  
Late Spring (Available in Naviance)
- **Parent Information Sheet** –  
Late Spring (Available in Naviance)

# HMHS Postsecondary Education Planning Guide

- ***Postsecondary Education Planning Guide***
  - We recommend reviewing the document in full
  - Find on the Counseling Department website under the <11<sup>th</sup> Grade> tab.
- **“10 Steps for Juniors,”** attached to back of packet

# Summer of 2018

- Jobs
- Academic Programs
- Community Service
- Sports, Music Camps
- College Visits
- Applications, Essays
- SAT/ACT Prep
- Independent Reading

# Application Options

- Regular Decision
- Early Decision I and II
- Early Action
- Restrictive/Single Choice Early Action
- Rolling
- Priority

# Admissions Criteria

- Grades
- Strength of Courses
- Test Scores
- Applications, Essays, Supplements
- Interviews
- Extracurricular Activities / Community Service



# Admissions Criteria (Continued)

- Jobs
- Recommendations – Counselor, Teachers, Others
- HMHS's Profile
- Geographic and Other Considerations – Diversity
- Additional Criteria – Portfolio, Auditions

# Application Process: Responsibilities

- **Student** - Applications, Essays, Supplements, Test Scores, Recommendation Requests, Transcript Request Cards, Deadlines
- **Counselor** - Transcripts, Recommendations, School Profile, School Report Forms, Mid-Year and Final Reports
- **Teacher** - Recommendations, Evaluation Forms

# Make the Process Your Own

- Adhere to deadlines
  - Available on college websites and Naviance
- Create an organizational system
  - Utilize tools and lists in Naviance, Google Docs, spreadsheets, or folders
- Always review college websites
  - Admissions requirements
  - Admissions process
  - Financial aid process

# Variety of Colleges

- Reach / Unpredictable
- Probable / Good Match
- Foundation / Safety

Naviance can help with this analysis.

# Financial Aid

- Financial Aid Meeting in September 2018
- FAFSA4caster ([www.fafsa.ed.gov](http://www.fafsa.ed.gov))
- Net Price Calculator
- Merit-Based Aid / Scholarships
- Need-Based Aid / Grants, Loans, Jobs – FAFSA and CSS Profile
- Local Scholarships

# Final Thoughts

- Take a deep breath
- Be flexible
- Be supportive
- Understand that everyone is an individual and approaches this process differently—at a different pace, with different needs and values
- Enjoy the journey

# Thank you for attending Junior Parent & Student Night!

- **HMHS Counselors:**

Jeff Holman

Judy Dorfman

Bill Seaman

Carla O'Hara

Steven Fluharty



- **HMHS Counseling Department Supervisor:**

Tammy McHale